

FOUR TEEN

LOWER GROUND

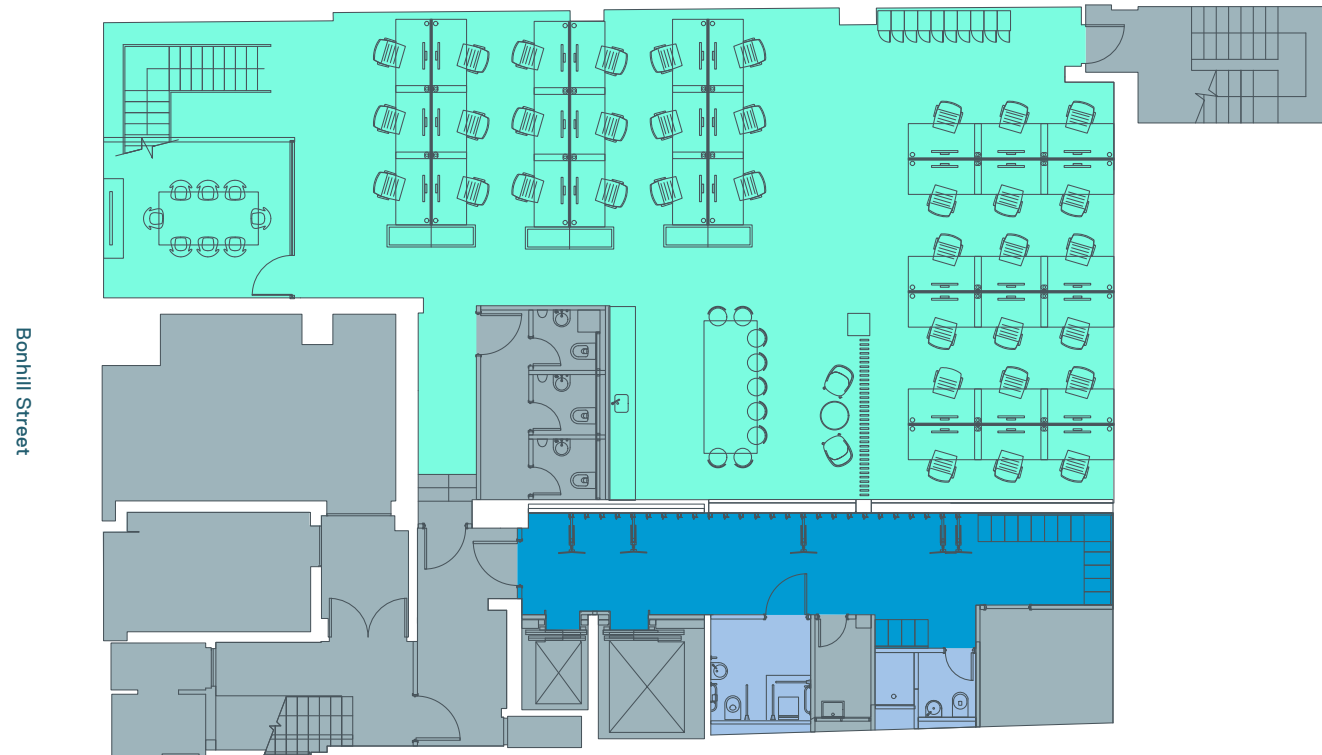
Office

2,217 sq ft / 206 sq m

Workstations	36
8 person meeting room	01
Kitchen/breakout area	01

Total Occupancy 36
Occupancy Ratio 1:6 Sq M

- Office
- Bike Store
- Showers
- Core



Floor plans not to scale,
for indicative purposes only.

FOUR TEEN

GROUND

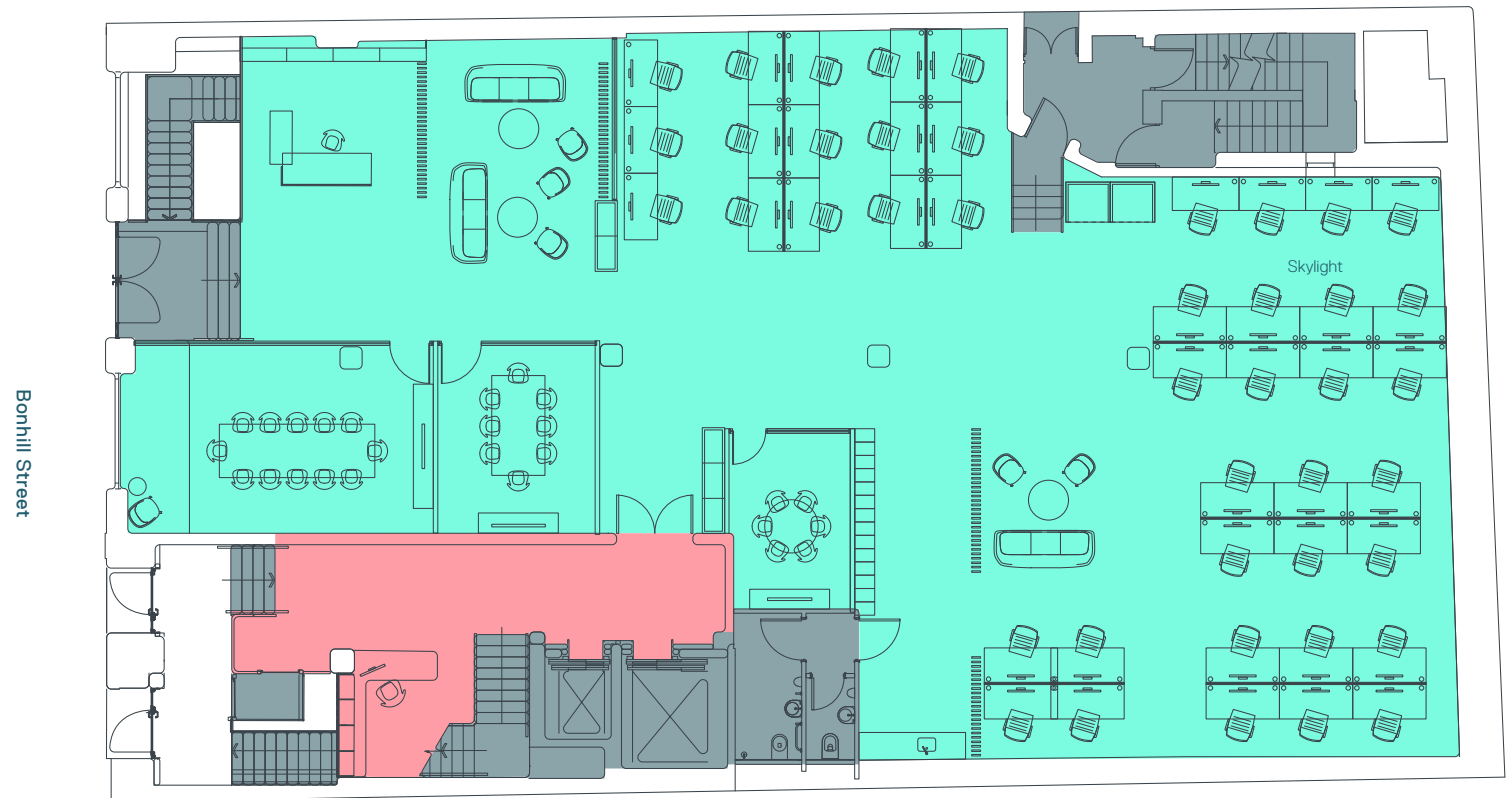
Office

3,745 sq ft / 348 sq m

Workstations	43
Reception	01
12 person meeting room	01
8 person meeting room	01
6 person meeting room	01
Kitchenette	01
Breakout areas	02

Total Occupancy 44
Occupancy Ratio 1:8 Sq M

- Office
- Reception
- Core



Floor plans not to scale,
for indicative purposes only.

FOUR TEEN

SECOND

Office

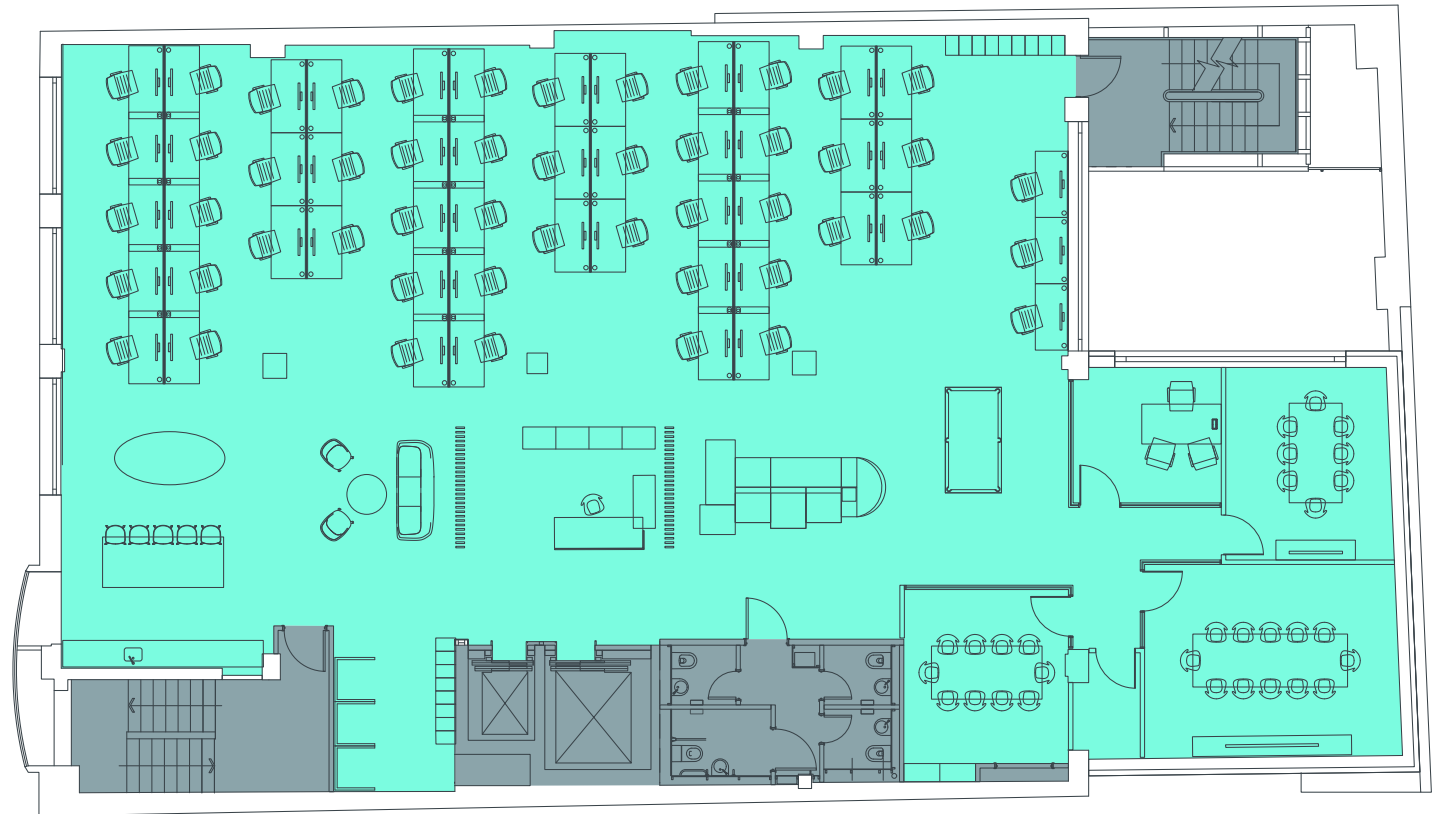
4,263 sq ft / 396 sq m

Workstations	51
Reception	01
12 person meeting room	01
10 person meeting room	01
8 person meeting room	01
1 person office	01
Kitchen	01
Breakout areas	02

Total Occupancy 52
Occupancy Ratio 1:8 Sq M

● Office
● Core

Bonhill Street



Floor plans not to scale,
for indicative purposes only.

FOUR TEEN

FIFTH

Office

1,931 sq ft / 179 sq m

Tenants Club

1,170 sq ft / 109 sq m

Terrace

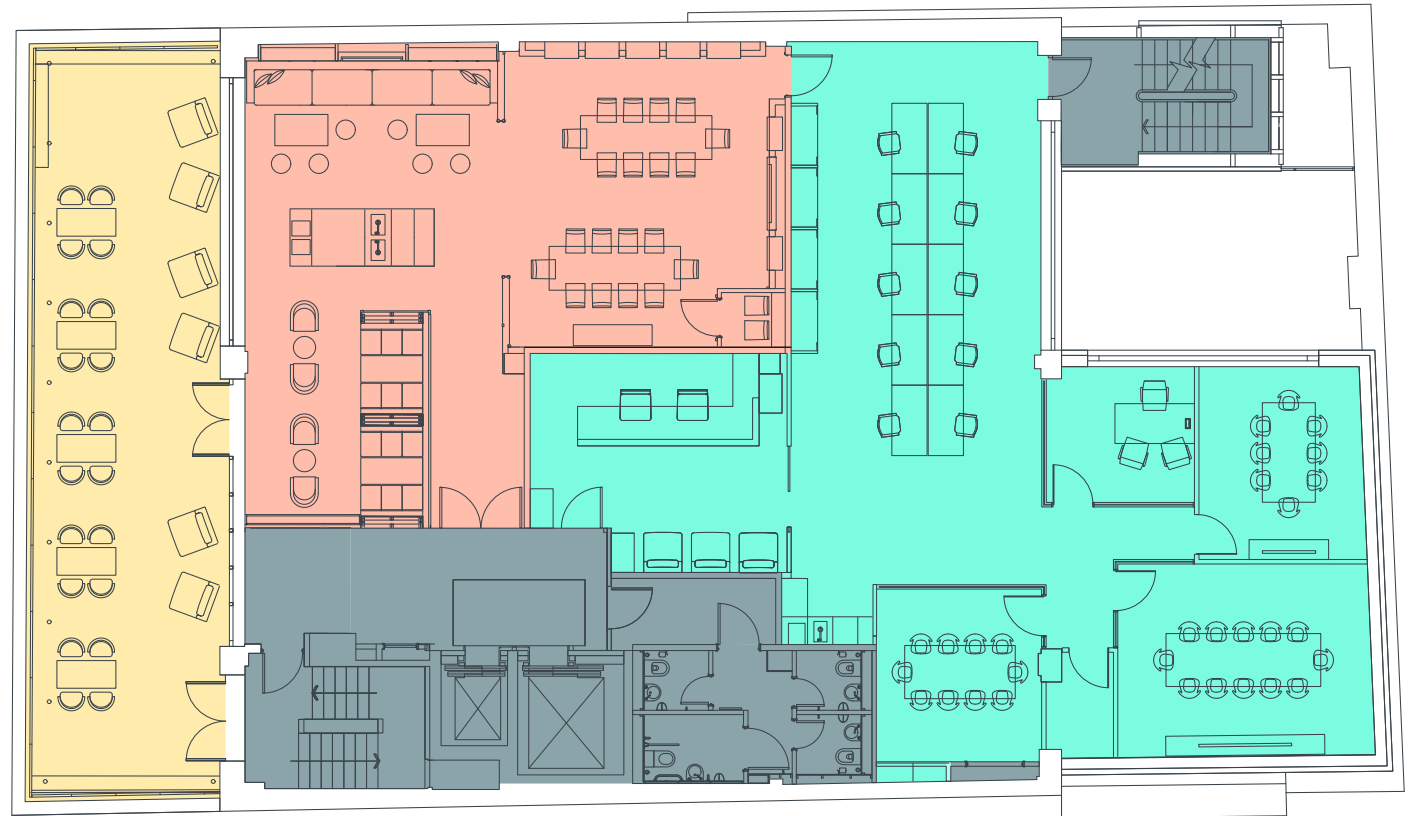
751 sq ft / 70 sq m

Workstations	10
Reception	02
12 person meeting room	01
10 person meeting room	01
8 person meeting room	01
1 person office	01
Kitchenette	01

Total Occupancy 10
Occupancy Ratio 1:8 Sq M

- Office
- Terrace
- Tenants Club 'Fourteen'
- Core

Bonhill Street



Floor plans not to scale,
for indicative purposes only.