

FOUR TEEN

LOWER GROUND

Office

2,217 sq ft / 206 sq m



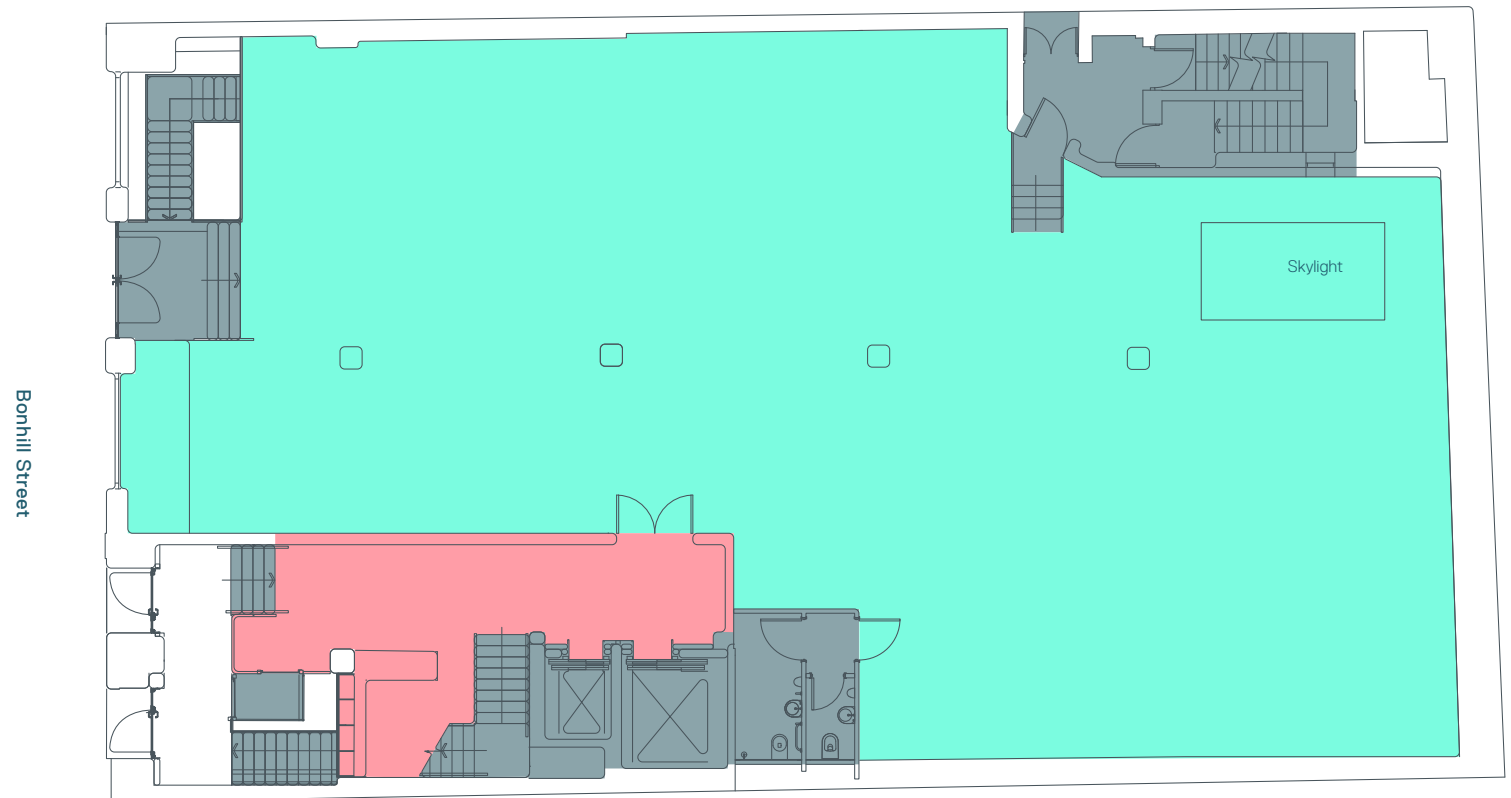
Floor plans not to scale,
for indicative purposes only.

FOUR TEEN

GROUND

Office

3,745 sq ft / 348 sq m



- Office
- Reception
- Core



Floor plans not to scale,
for indicative purposes only.

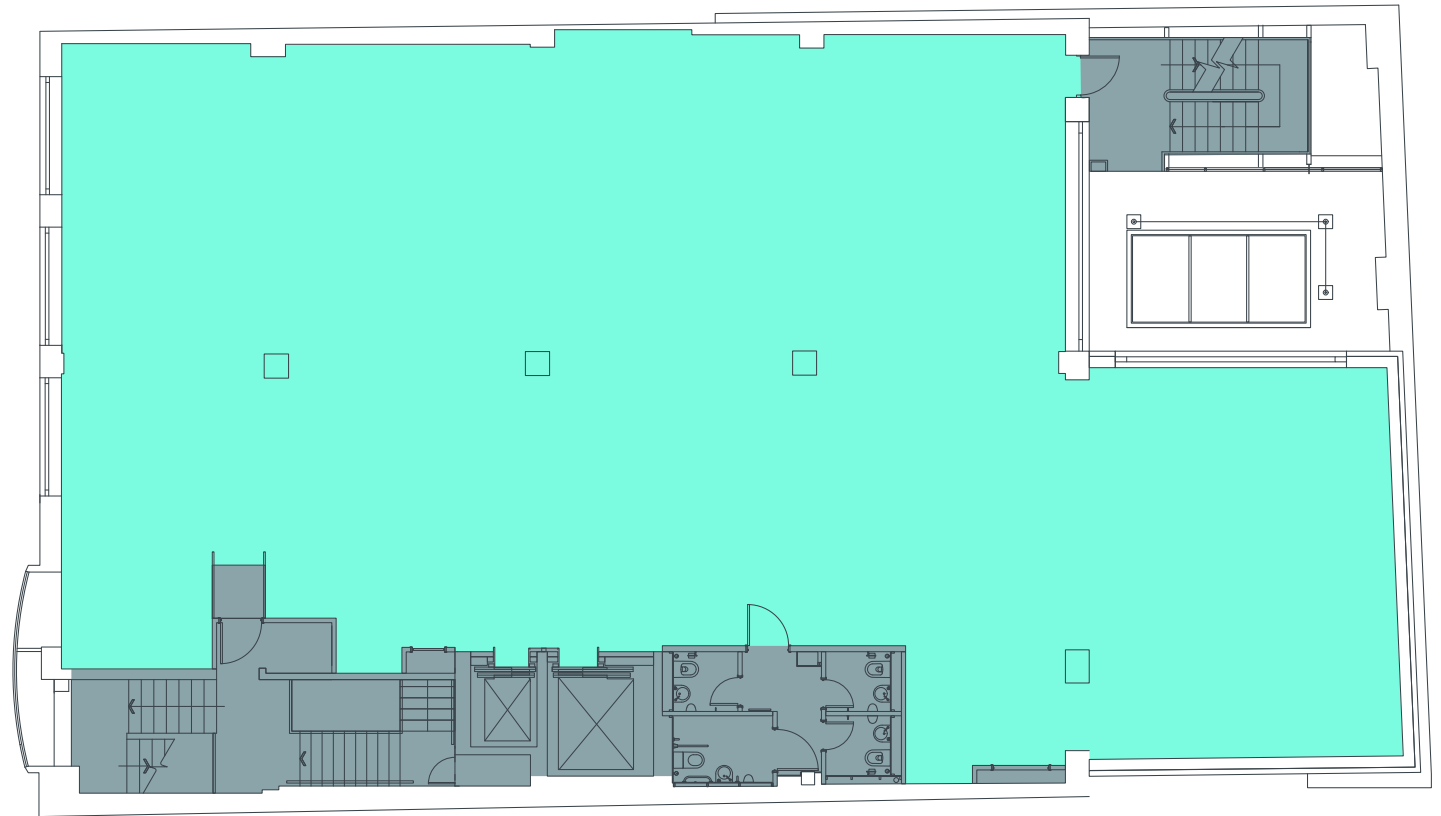
FOUR TEEN

FIRST

Office

4,116 sq ft / 387 sq m

Bonhill Street



- Office
- Core



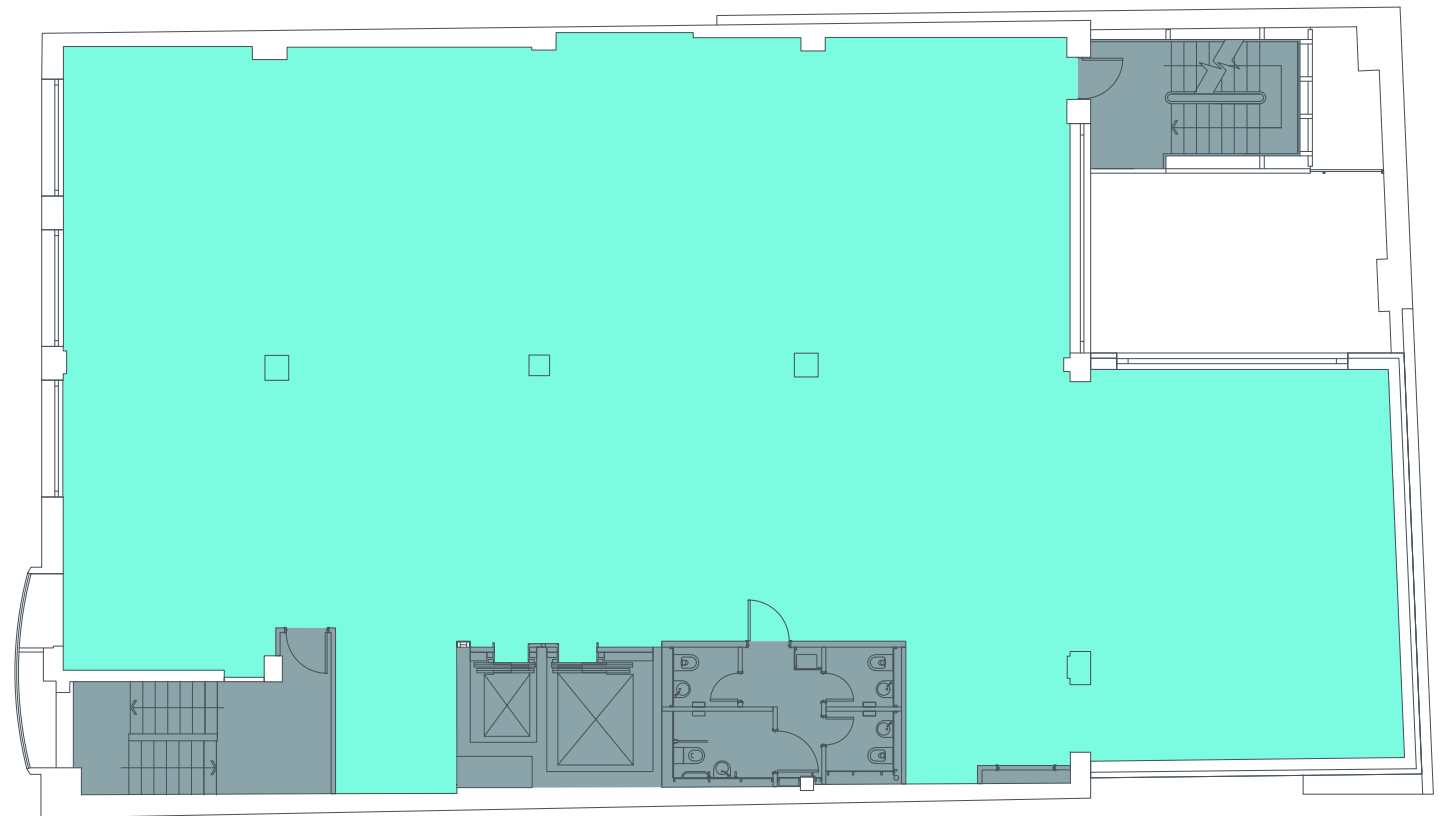
Floor plans not to scale,
for indicative purposes only.

FOUR TEEN

SECOND

Office

4,263 sq ft / 396 sq m



- Office
- Core



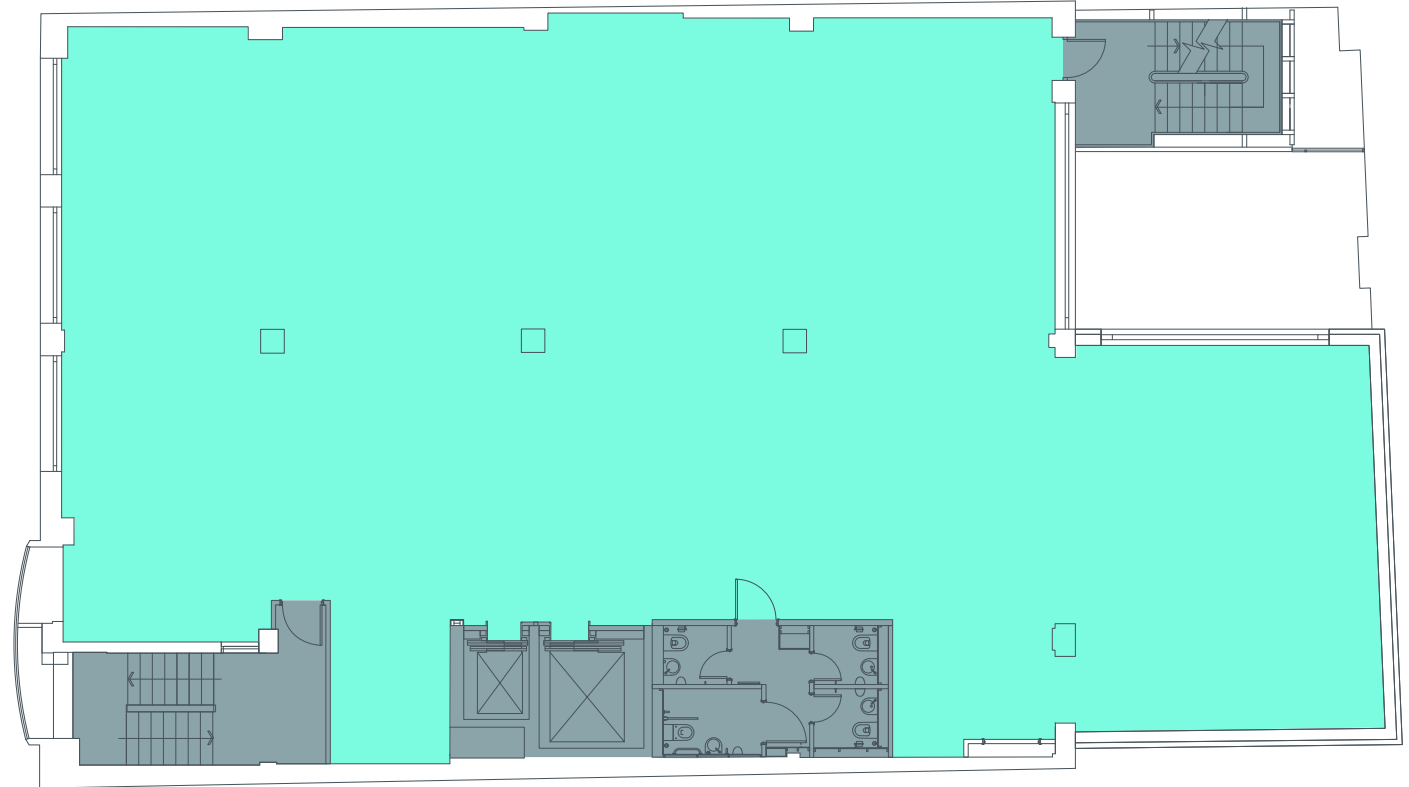
Floor plans not to scale,
for indicative purposes only.

FOUR TEEN

THIRD Office

4,263 sq ft / 396 sq m

Bonhill Street



- Office
- Core



Floor plans not to scale,
for indicative purposes only.

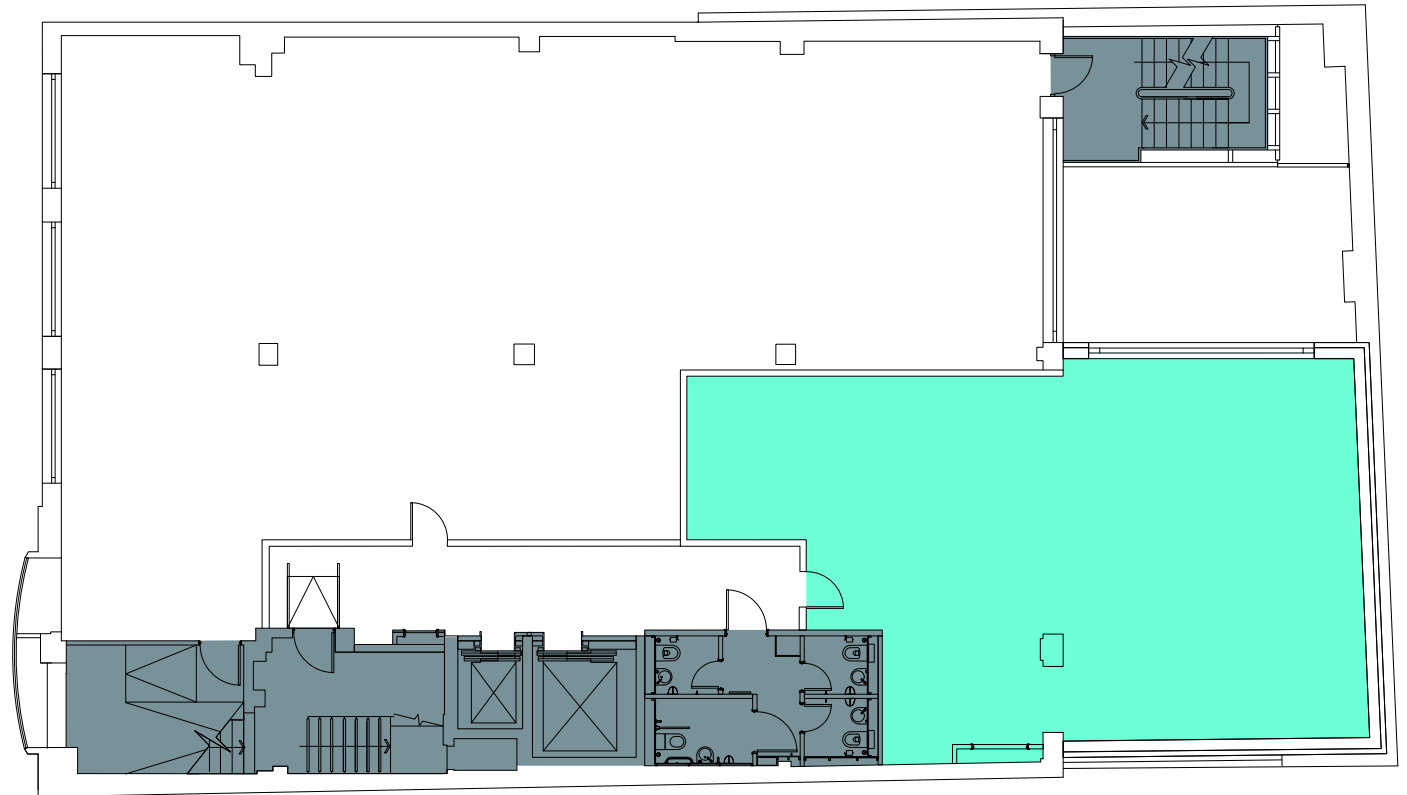
FOUR TEEN

PART FOURTH

Office

1,206 sq ft / 112 sq m

Bonhill Street



- Office
- Core



Floor plans not to scale,
for indicative purposes only.

FOUR TEEN

FIFTH

Office

Let

Tenants Club

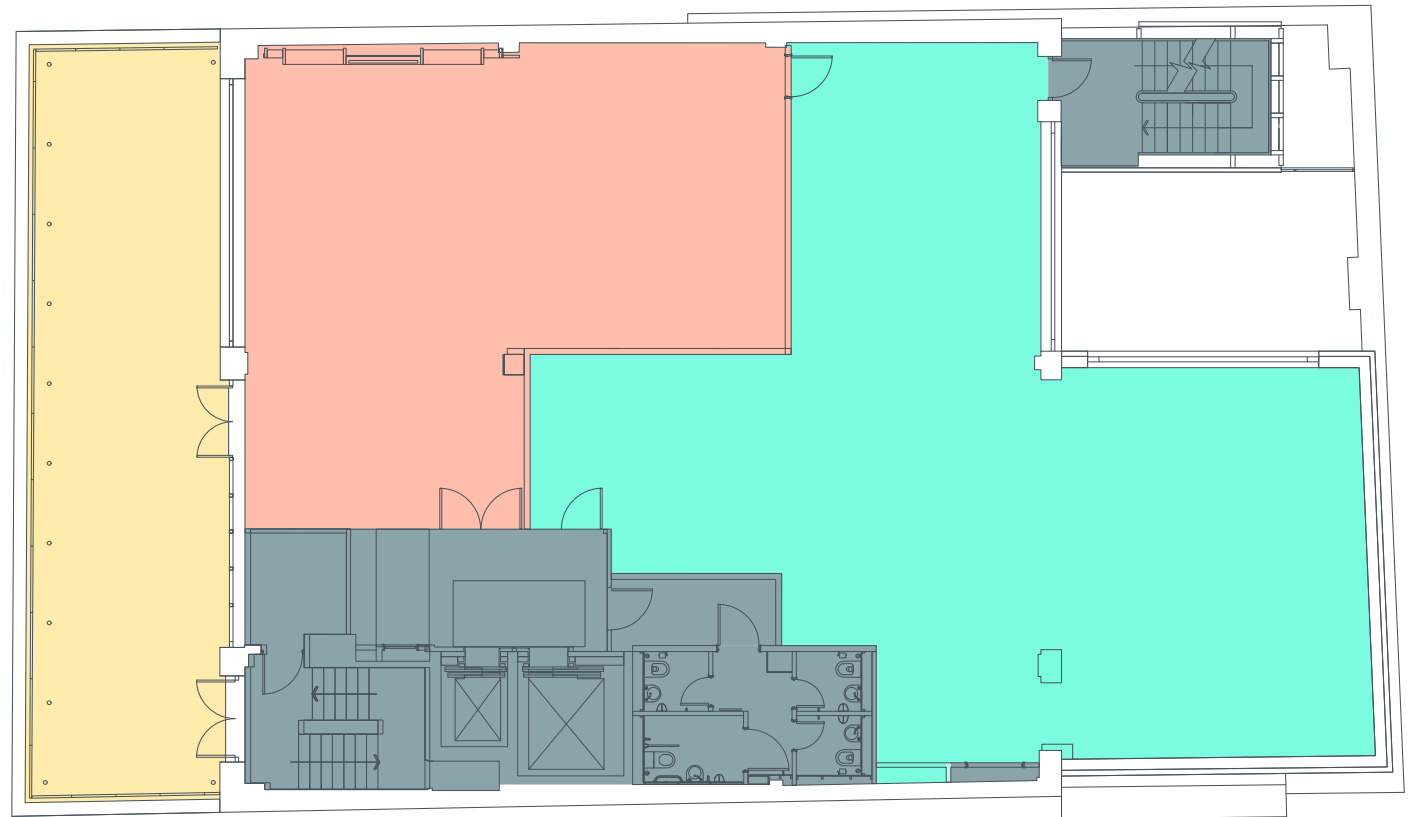
1,170 sq ft / 109 sq m

Terrace

751 sq ft / 70 sq m

- Office
- Terrace
- Tenants Club 'Fourteen'
- Core

Bonhill Street



Floor plans not to scale,
for indicative purposes only.