

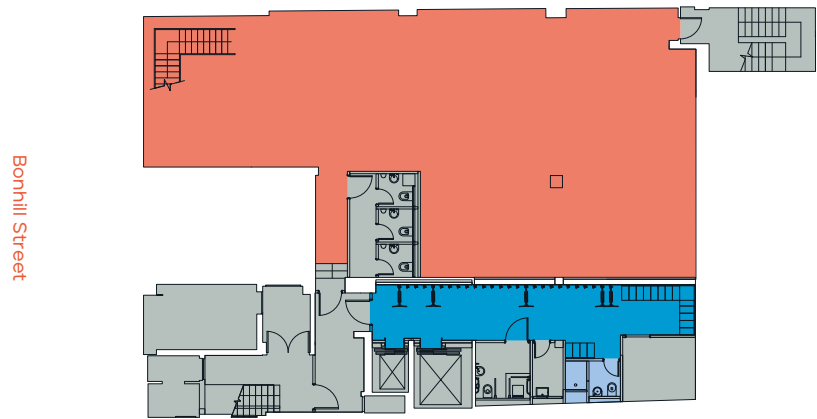
# FOURTEEN

---

## LOWER GROUND

Office

2,217 sq ft / 206 sq m

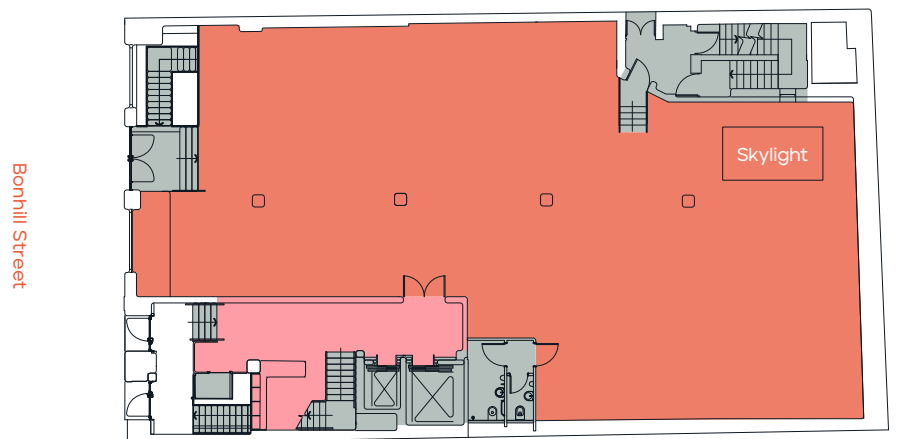


---

## GROUND

Office

3,745 sq ft / 348 sq m



- Office
- Reception
- Bike Store
- Showers
- Core

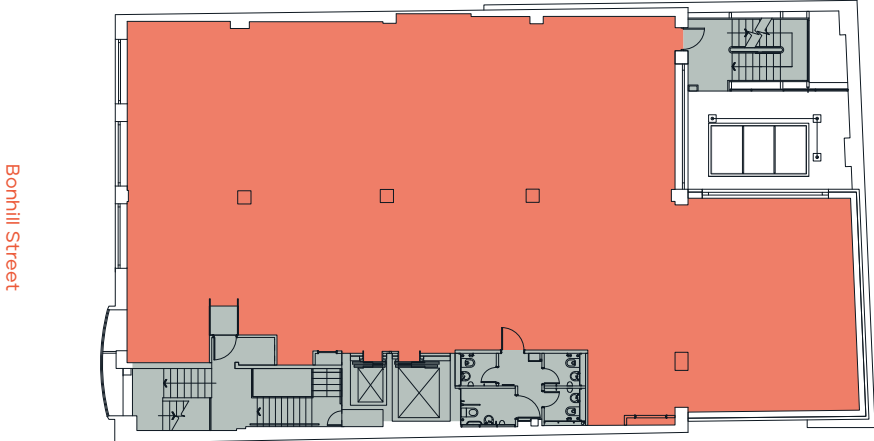


Floor plans not to scale,  
for indicative purposes only.

# FOURTEEN

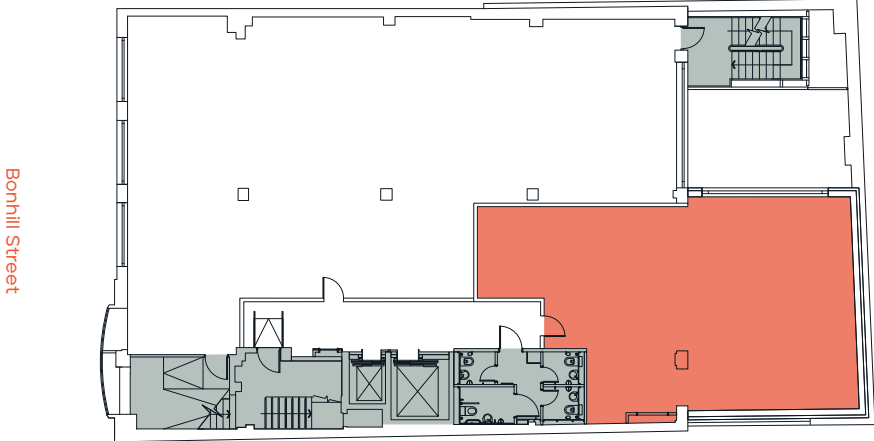
## FIRST

Office  
4,166 sq ft / 387 sq m



## PART FOURTH

Office  
1,206 sq ft / 112 sq m



- Office
- Reception
- Bike Store
- Showers
- Core



Floor plans not to scale,  
for indicative purposes only.