

# FOUR TEEN

---

## LOWER GROUND

### Office

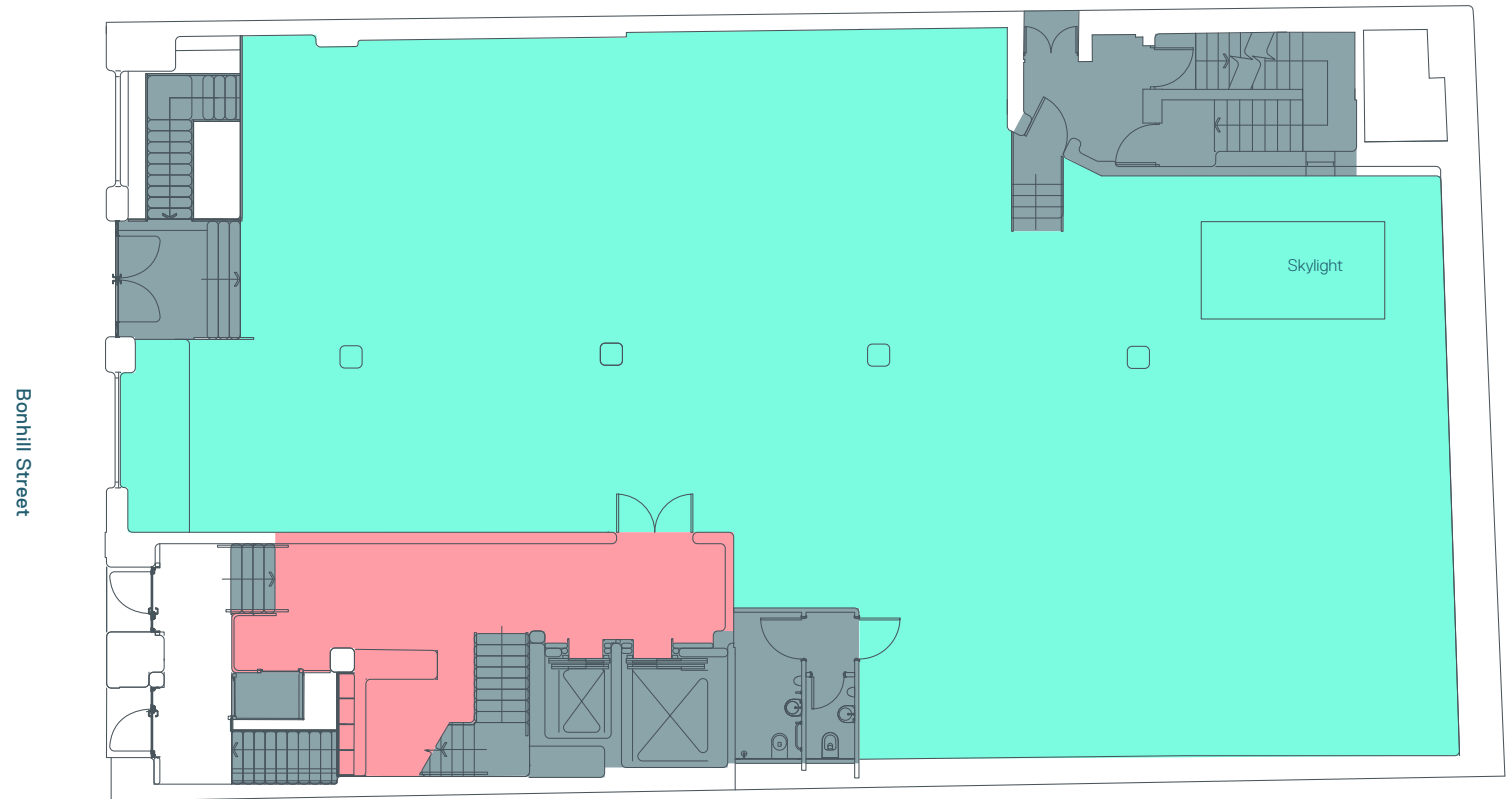
2,217 sq ft / 206 sq m



Floor plans not to scale,  
for indicative purposes only.

# FOUR TEEN

**GROUND**  
**Office**  
3,745 sq ft / 348 sq m



- Office
- Reception
- Core



Floor plans not to scale,  
for indicative purposes only.

# FOUR TEEN

## FIRST Office

4,116 sq ft / 387 sq m

Bonhill Street



● Office  
● Core



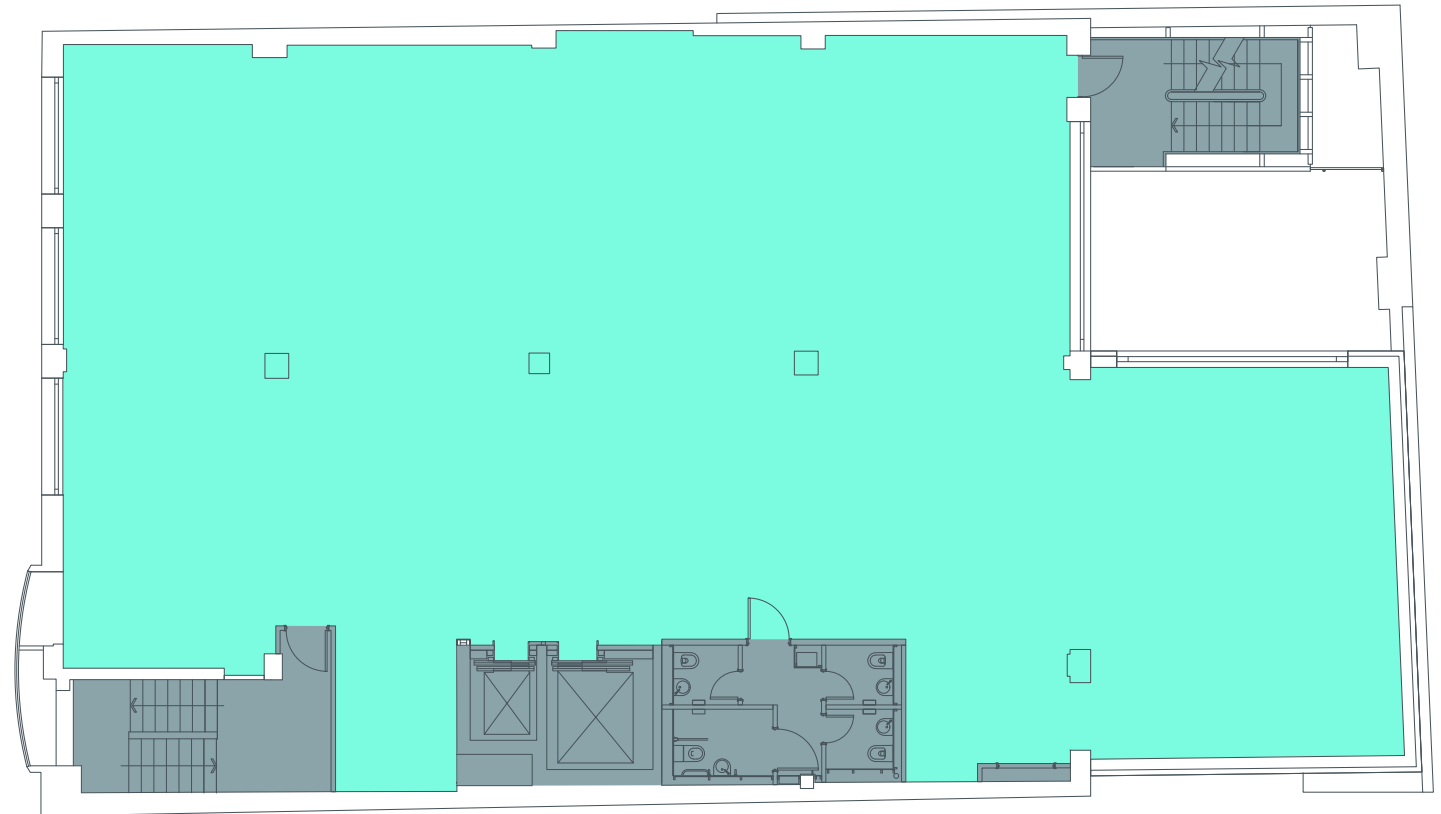
Floor plans not to scale,  
for indicative purposes only.

# FOUR TEEN

## SECOND

### Office

4,263 sq ft / 396 sq m



- Office
- Core



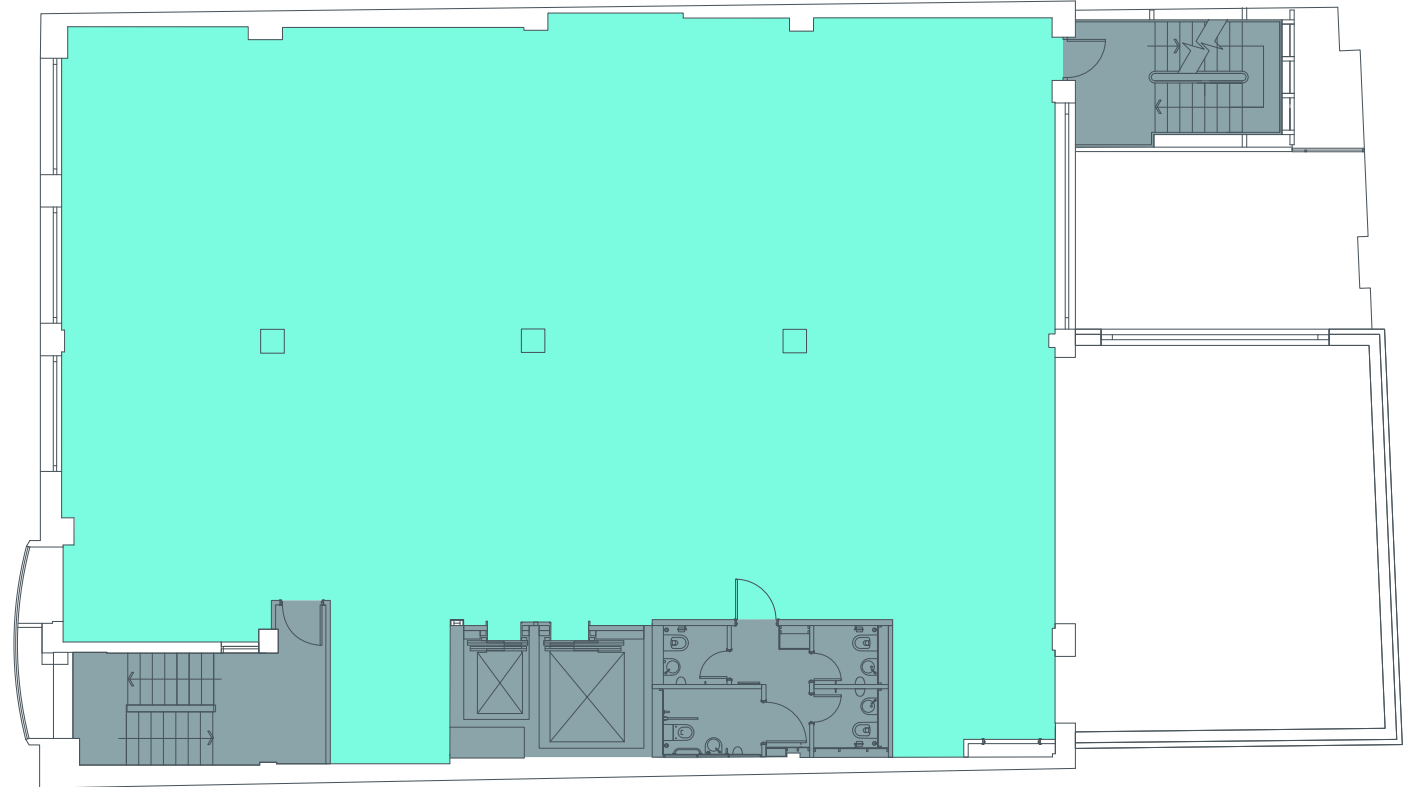
Floor plans not to scale,  
for indicative purposes only.

# FOUR TEEN

## THIRD Office

4,263 sq ft / 396 sq m

Bonhill Street



- Office
- Core



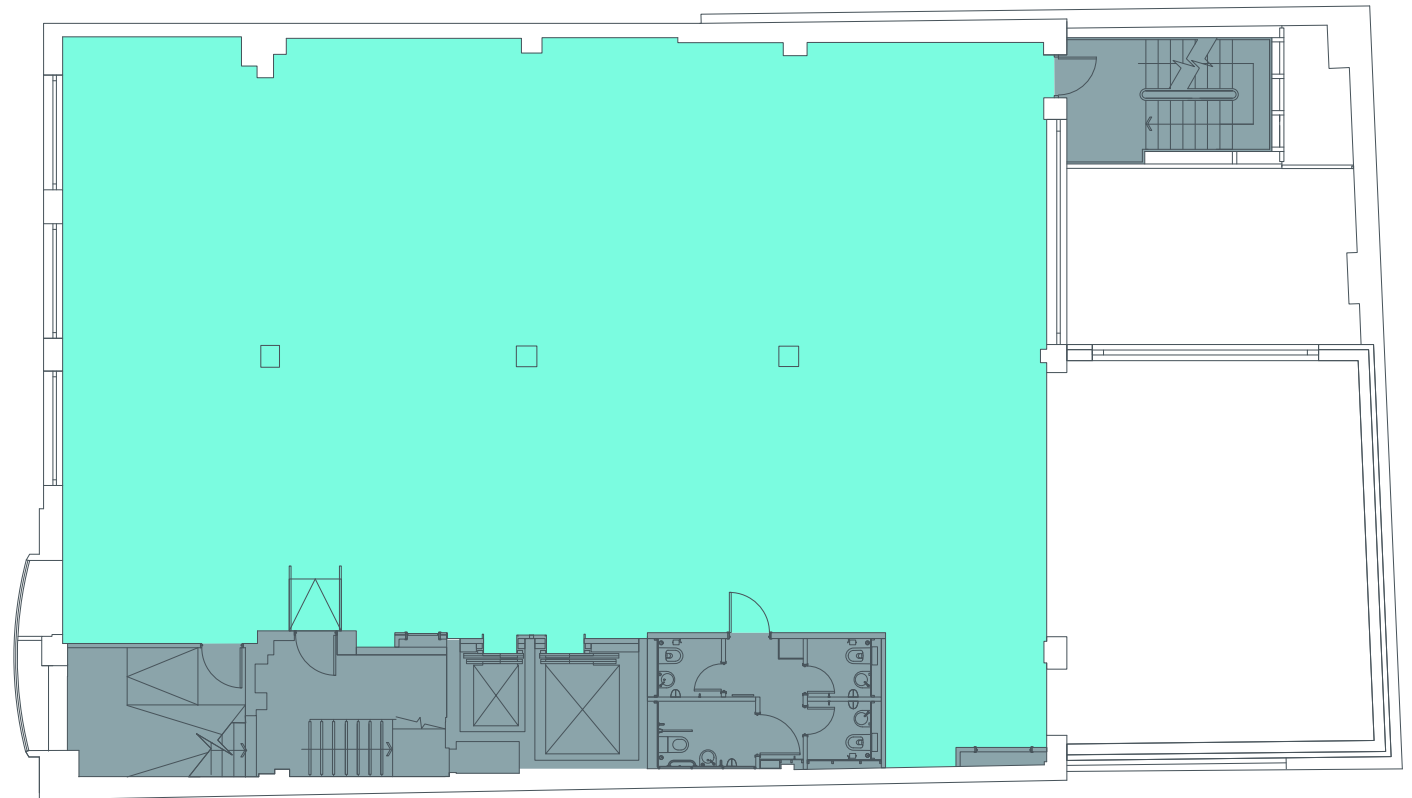
Floor plans not to scale,  
for indicative purposes only.

# FOUR TEEN

## FOURTH Office

4,176 sq ft / 388 sq m

Bonhill Street



● Office  
● Core



Floor plans not to scale,  
for indicative purposes only.

# FOUR TEEN

## FIFTH

### Office

1,931 sq ft / 179 sq m

### Tenants Club

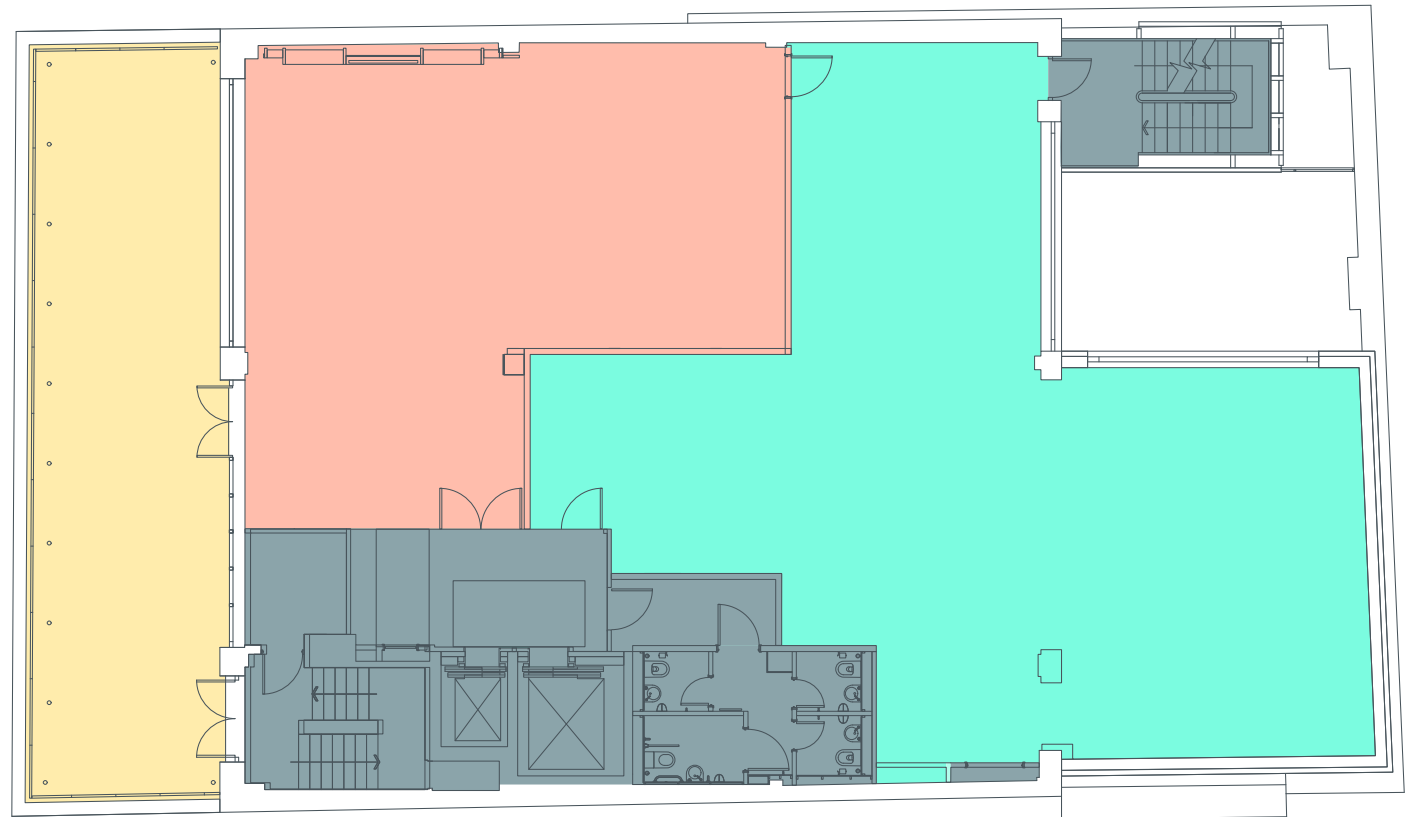
1,170 sq ft / 109 sq m

### Terrace

751 sq ft / 70 sq m

- Office
- Terrace
- Tenants Club 'Fourteen'
- Core

Bonhill Street



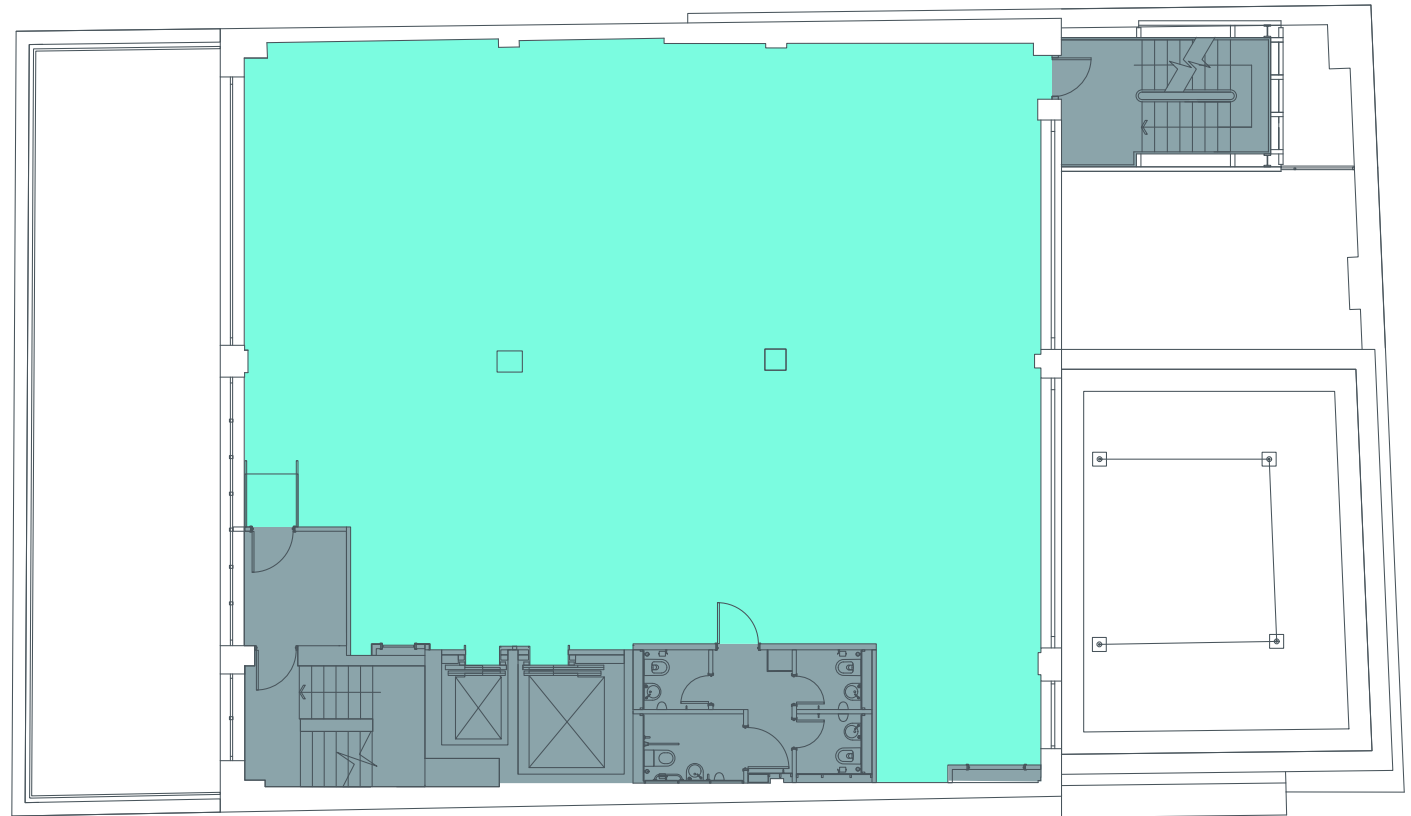
Floor plans not to scale,  
for indicative purposes only.

# FOUR TEEN

## SIXTH Office

2,691 sq ft / 250 sq m

Bonhill Street



- Office
- Core



Floor plans not to scale,  
for indicative purposes only.



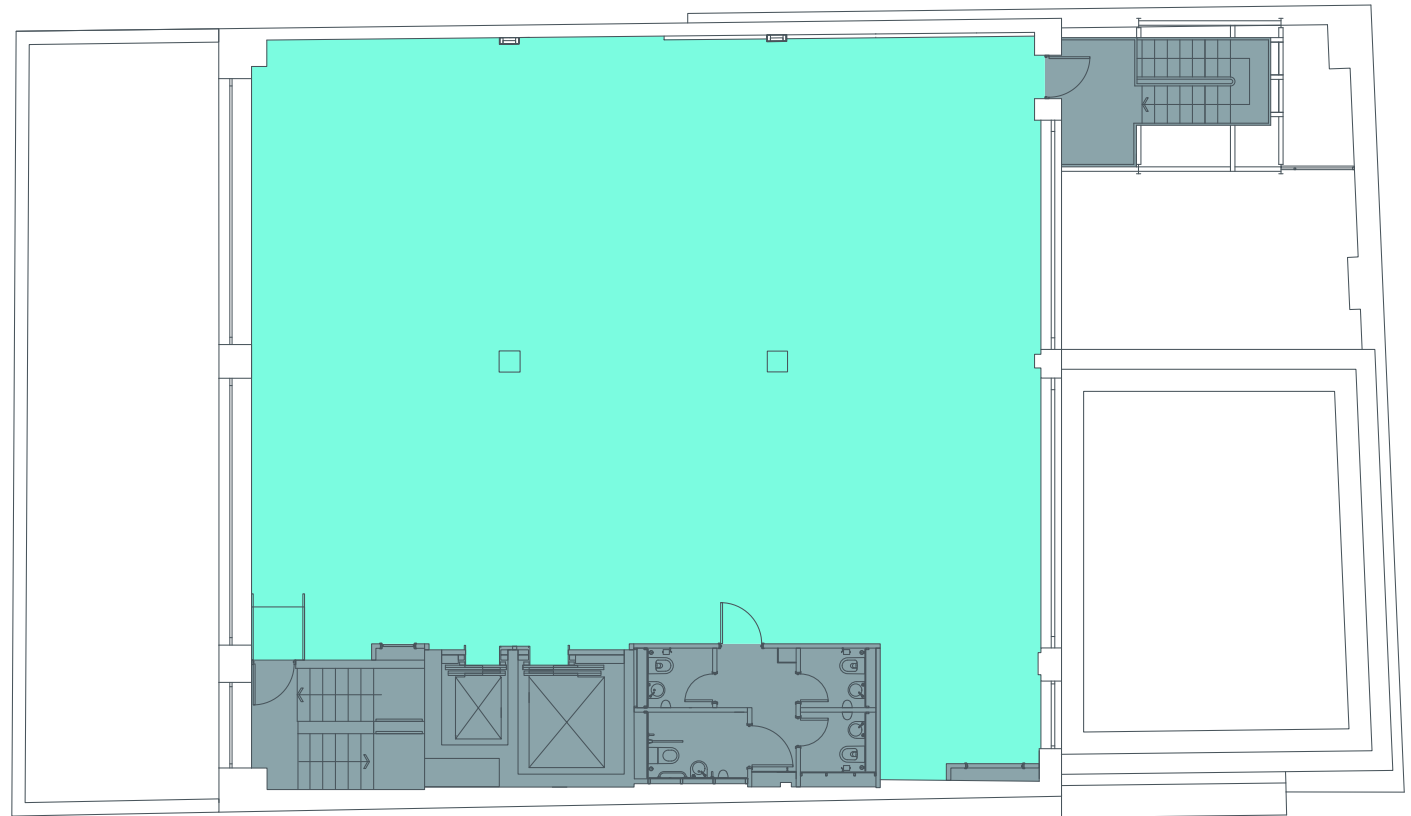
# FOUR TEEN

## SEVENTH

### Office

2,766 sq ft / 257 sq m

Bonhill Street



- Office
- Core



Floor plans not to scale,  
for indicative purposes only.